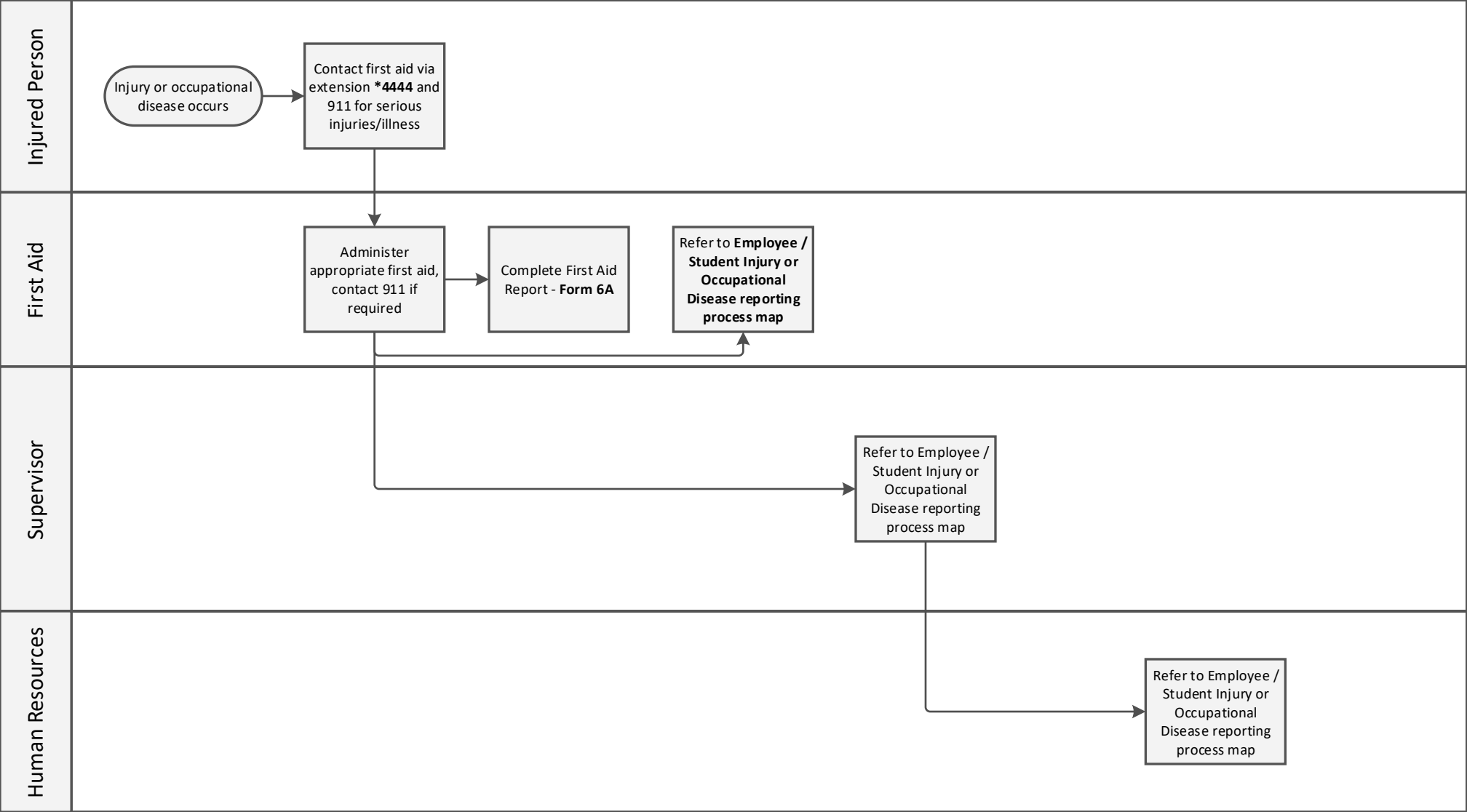


OH&S Process Map



First Aid – WorkSafeBC Reporting Requirements



Resources:

***4444:** On-Site First Aid Attendants—Call Local 4444 (during Monday-Friday, 8:30AM-4PM only).

Form 6A: Worker's Report of Injury or Occupational Disease To Employer (form 6A).

Employee / Student Injury or Occupational Disease reporting process map: OH&S process map found on CMTN website or SharePoint portal under Health & Safety topics.